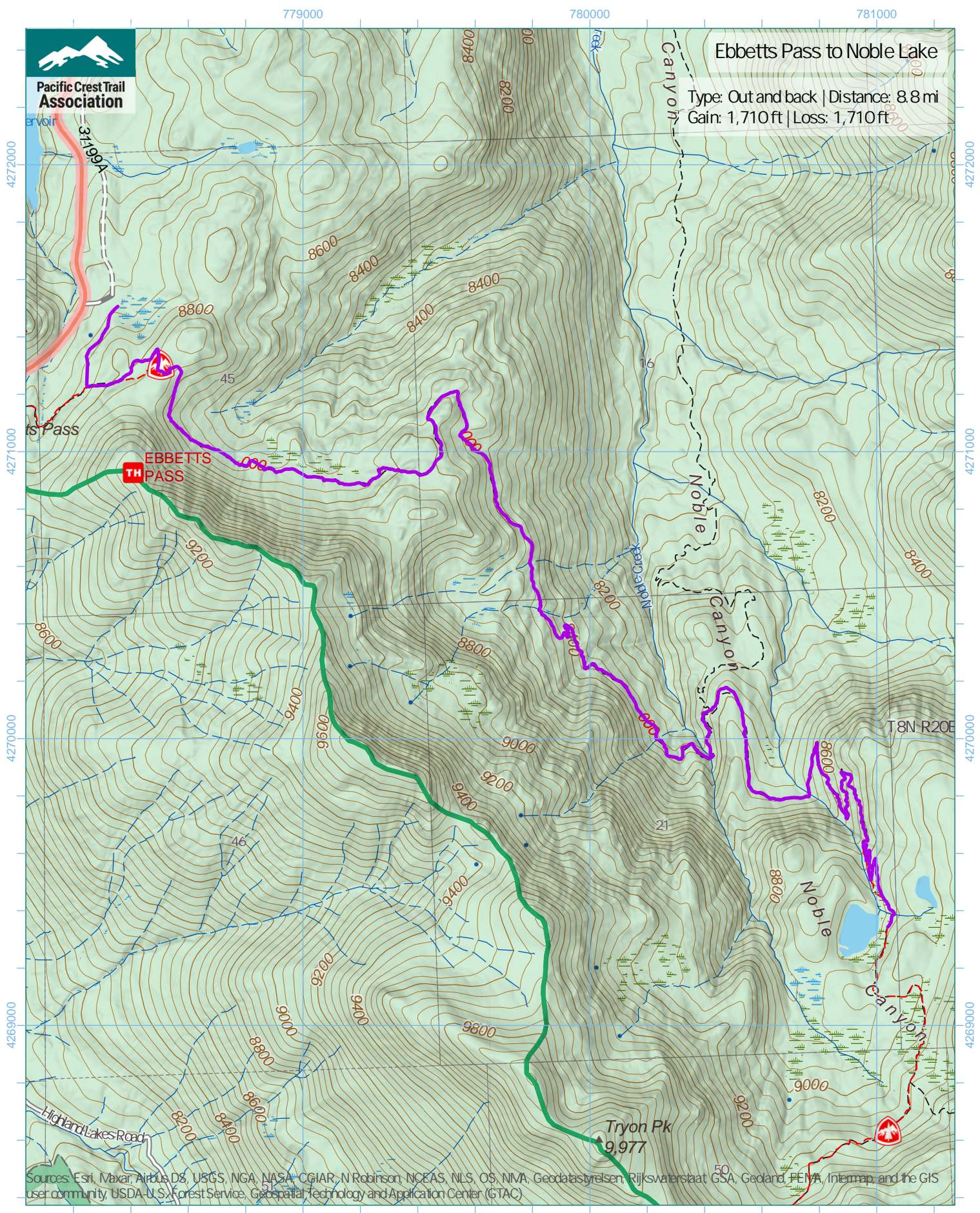




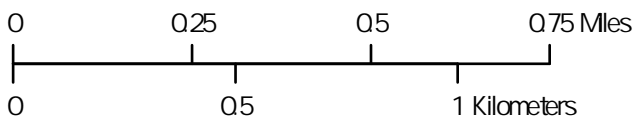
Pacific Crest Trail Association

# Ebbetts Pass to Noble Lake

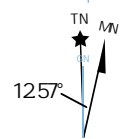
Type: Out and back | Distance: 8.8 mi  
Gain: 1,710 ft | Loss: 1,710 ft



Sources: Esri, Maxar, Airbus DS, USGS, NGA, NASA, CGIAR, N Robinson, NCEAS, NLS, OS, NIMA, Geodatasystemen, Rijkswaterstaat GSA, Geoland, FEMA, Intermap and the GIS user community, USDA-U.S. Forest Service, Geopatial Technology and Application Center (GTAC)



1 inch equals 1,417 feet  
1:17,000  
WGS 1984 UTM Zone 10N



Trip data by PCTA  
Basemap by US Forest Service  
Contour interval: 40ft